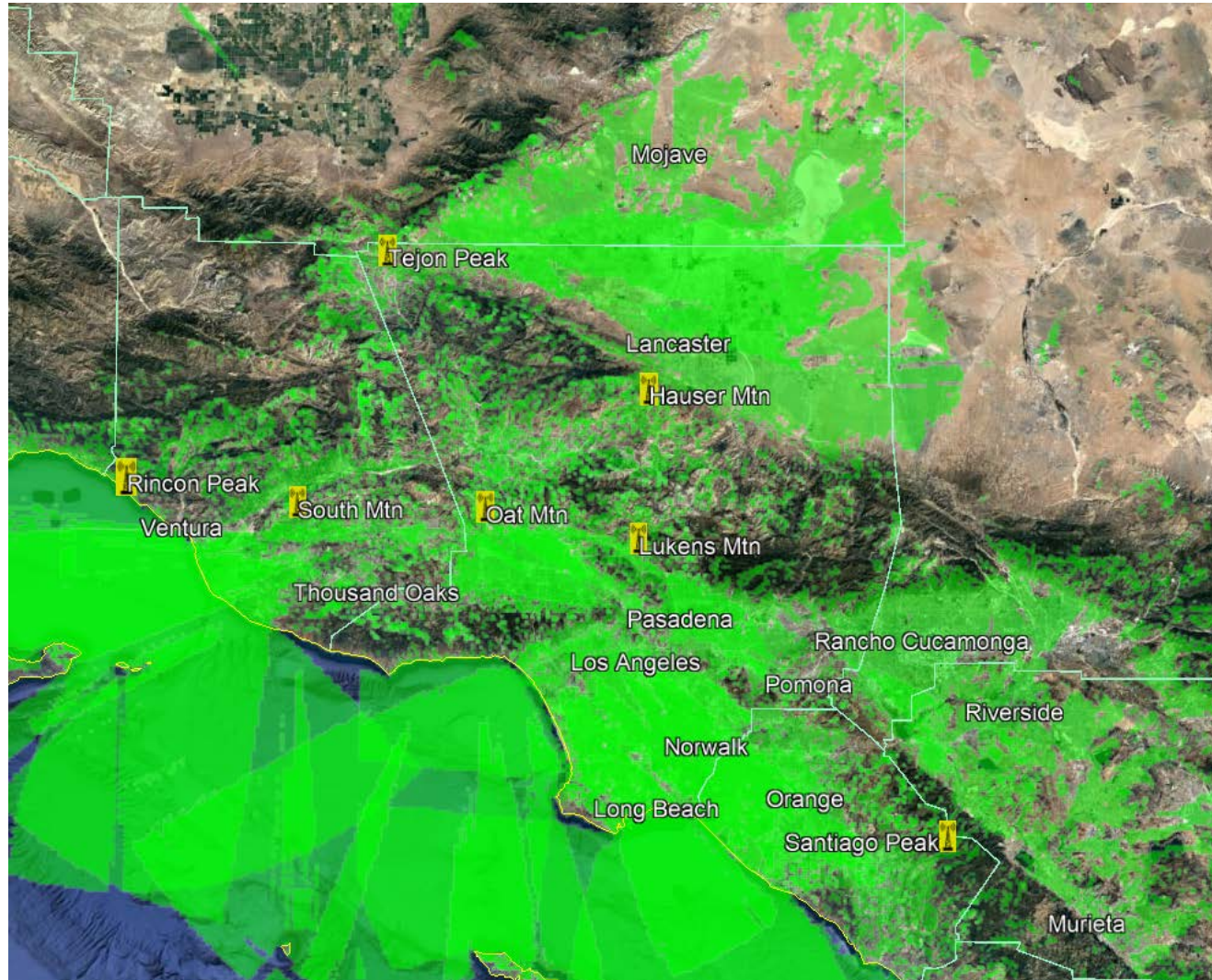


PHASE 2 TRI-COUNTY REGION: LOS ANGELES, VENTURA, ORANGE

PREDICTED COVERAGE, SPRING 2021



This is a map of Phase 2 showing the predicted coverage in the Tri-County Region consisting of Los Angeles, Ventura, and Orange Counties. This region is expected to be operational in wide area trunking in the Spring of 2021.

The map shows seven repeater sites in this region located at Tejon Peak, Rincon Peak, South Mountain, Oat Mountain, Hauser Mountain, Lukens Mountain, and Santiago Peak.